

# Help Students Remember Their Inner ChAMPion



## Assess memory with the test built specifically for youth

The ChAMP is an **easy-to-use**, examiner-administered **test of memory** for use with **children, adolescents, and young adults** that allows both in-depth memory evaluation and memory screening. The ChAMP can assist in assessing memory problems across clinical groups such as ADHD, traumatic brain injury, ASD, and math/language/reading/intellectual disabilities.



### ChAMP

**PURPOSE** Assesses visual and verbal memory

**AGE** 5-21 years

**FORMAT** Paper and pencil; online scoring via PARiConnect

**TIME** 30-40 minutes for full assessment; 10-15 minutes for Screening Index

**QUAL** C

## Don't let memory issues stand in the way of helping children succeed.

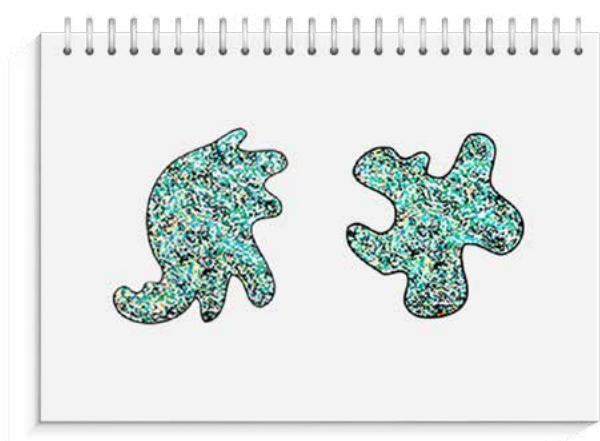


### TEST MORE STUDENTS IN LESS TIME

Minimal required materials and fast administration times allow you to better manage large caseloads.

## Use the memory test built for students.

Real-life scenarios and engaging stimuli help children maintain focus.



Test items displayed are representations and not actual test images.

## FEATURES AND BENEFITS

### Fast—

Administer the full test in less than 40 minutes, or the Screening Index in less than 10 minutes. Scoring is available on PARiConnect.

### Easy—

One form and one stimulus book are the only items needed. Our e-Stimulus Book makes it even easier to transport and administer!

### Includes reliable change—

Reliable change scores are available when scored on PARiConnect.

### Built-in validity indicator—

Embedded validity index alerts you to potentially invalid scores.

### Helpful interventions—

Includes case examples and intervention recommendations for both school and home.

### Standardized—

Using a large normative sample of more than 1,200 participants in 30 states representative of the 2012 U.S. Census.

### Screening Index—

Comprising one verbal and one visual subtest, lets you quickly screen for memory.