

Self-Directed Search® (SDS®)

John L. Holland, PhD, and Melissa A. Messer, MHS



The gold-standard career assessment and exploration tool!

Assesses career
 interests and assists
 in career and
 educational planning

Age: 11-70 years

Time: 20 minutes to
 administer, 10
 minutes to score

Qualification level: A

Overview

- Based on Dr. John Holland's RIASEC theory that both individuals and work environments can be classified according to six basic types: Realistic, Investigative, Artistic, Social, Enterprising, and Conventional. When a personality type matches a work environment type, one is more likely to find career satisfaction.
- Helps job seekers learn more about what types of potential educational and occupational options fit their personality.
- Data are based on the SDS Form R, 5th Edition (2013). No items were changed, and no new data were collected.

What's new

- All print components have been completely redesigned to be more appealing, more user friendly, and more intuitive.
- Targeted versions for adults and students make choosing the appropriate print form easier.
- The SDS Web site (see next page) has been updated to align with the print products and now provides one of three customized and interactive report types based on the user's demographic data and job history: Standard, Student, or Veteran. Users have the ability to sort, filter, select, and print report results.

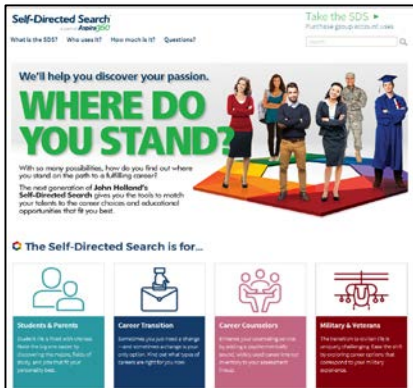
StandardSDS

- For adults ages 18 years and older.
- Retains the features that made the Form R the most widely used form of the SDS.
- Includes an **updated** Occupations Finder (OF) with more than 1,400 jobs linked to the O*NET.
- An **all-new** You and Your Career Workbook helps users narrow down career matches and learn more about matched careers.
- An **updated** SDS Educational Opportunities Finder lists programs of study by Holland Occupational Code (HOC) and includes the Classification of Instructional Programs (CIP) code and category.

StudentSDS

- A revision of the SDS Career Explorer designed for students in middle, junior, and high school.
- Aligns with Individual Career and Academic Plan (ICAP) Quality Indicators.
- Includes an **all-new** You and Your Future Workbook, which features bold graphics and imagery designed to engage students.
- A **revised** Career Finder features three indexes: Holland Occupational Code, Career Cluster, and Alphabetical.

An improved online experience via www.self-directed-search.com



- The [www.self-directed-search](http://www.self-directed-search.com) Web site offers convenient **online** administration and scoring that can be completed from any computer. It has been **revised** to correspond with the look and feel of the new print products – it is brighter, more colorful, and more interactive.

- Describes how the test works and how it helps those of different ages, backgrounds, and work histories.

- After completing the online assessment, users receive one of three **all-new** interactive, customized reports based on their provided demographic information and job history: **StandardSDS**, **StudentSDS**, or **VeteranSDS**.

- All reports include the user's two-or three-letter Summary Code, lists of occupations and programs of study that match that code, a list of occupations based on the user's daydream occupations, an overview of salary data, links to resources, and more.

- Printable tables can be customized by filtering and sorting by Holland Occupational Code, career cluster, and education level required.

- Available SDS group and partnership purchase options offer the flexibility to meet a range of needs among clients, students, or group members.

Technical information

- Both the StandardSDS and StudentSDS use normative data from the SDS Form R, 5th Edition (2013), which was standardized on 1,739 students and adults ages 11 to 70 years.
- Coefficients for the Activities, Competencies, and Occupations scales range from .71 to .93, and summary scale coefficients range from .88 to .94.
- Test-retest reliability ranged from .82 to .96 on the overall sample, indicating that summary scale scores have substantial stability over time.
- Correlates significantly with three factors from the NEO Personality Inventory (Extraversion, Openness, and Agreeableness) and other measures of personality, including the Career Thoughts Inventory (CTI).